

CHANGA PANI PROGRAM-

Punjab

PRESENTATION TO Chairman P&D Board

Urban Unit
P&D Department
Government of Punjab
3rd September 07





In the name of Allah, the Beneficent, the Merciful

بِسْمِ اللّٰهِ الرَّحْمٰنِ الرَّحِیْمِ

Waiting for Changa Pani :MDG 7



Partners

- WASA Lahore
- Urban Unit P&D
- ASB
- CDG L(UC 60)

Changa Pani Programme

- Project aims to provide 24/7 water and sanitation facilities , health and hygiene education to 21,000 people in low income area of Lahore (UC-60 Badar Colony)
- Policy Learning Model for Replications in WASAs /Cities of Punjab



Location : $31^{\circ}33'05$ N & $74^{\circ}24' 56$ E.



Project Area



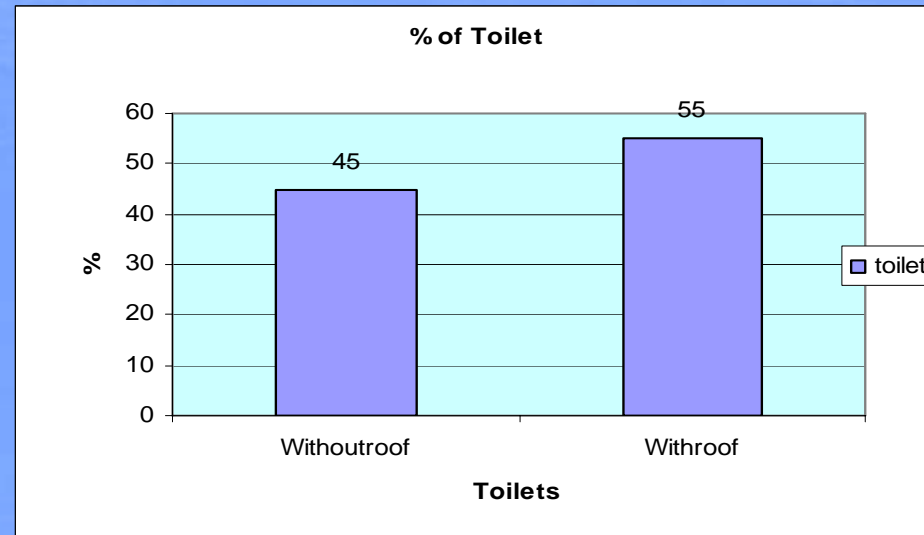
Pointer 31°33'10.39" N 74°24'59.87" E elev 711 ft Streaming 100%

Eye alt 3126 ft

Community Existing Situation



... waiting for WATSAN



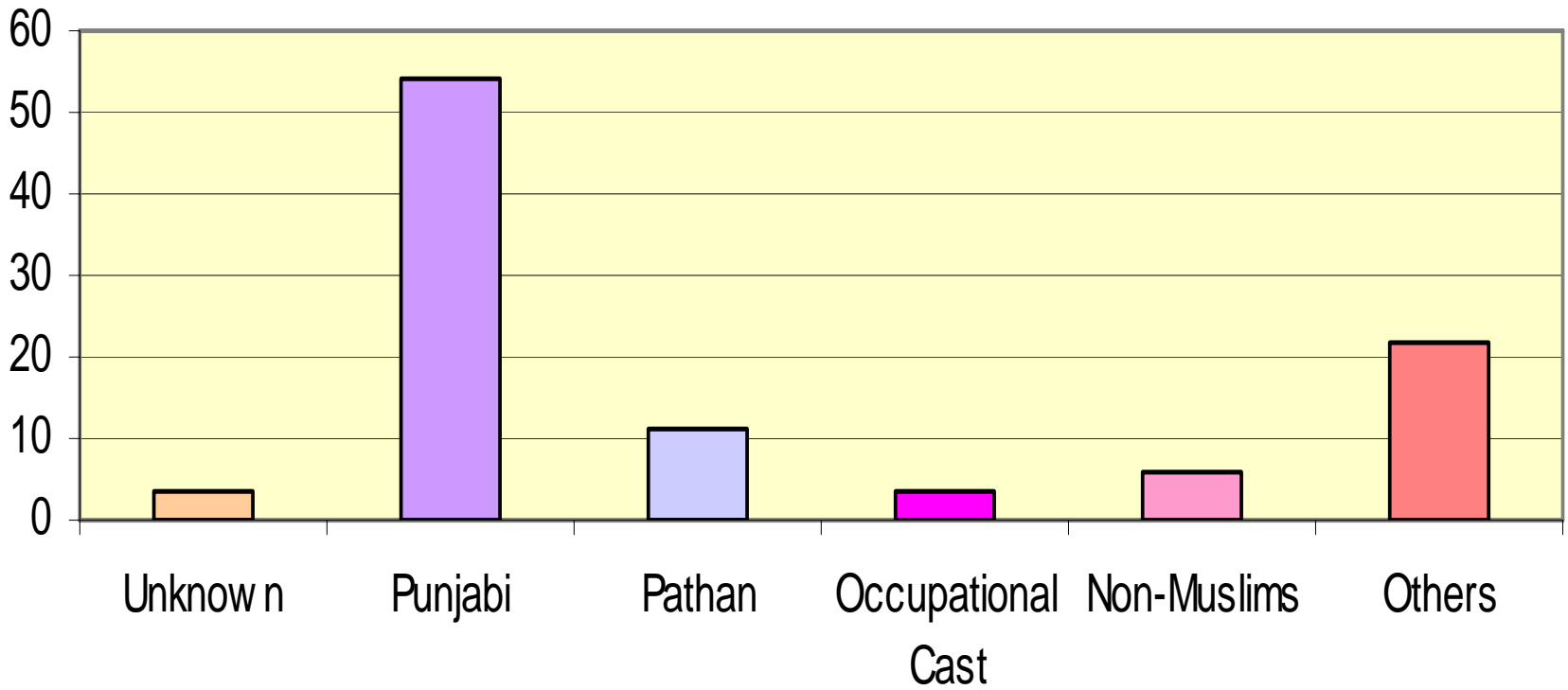
Economic Profile of Badar Colony

- After conducting survey of 750 household in Bader Colony the following data came into knowledge:
- Most of the people are Muslims & Punjabi speaking but small number of non-Muslims (Christians) are also residing in the area.
- Most of people are illiterate.
- Average income of residents is approximately 5000.

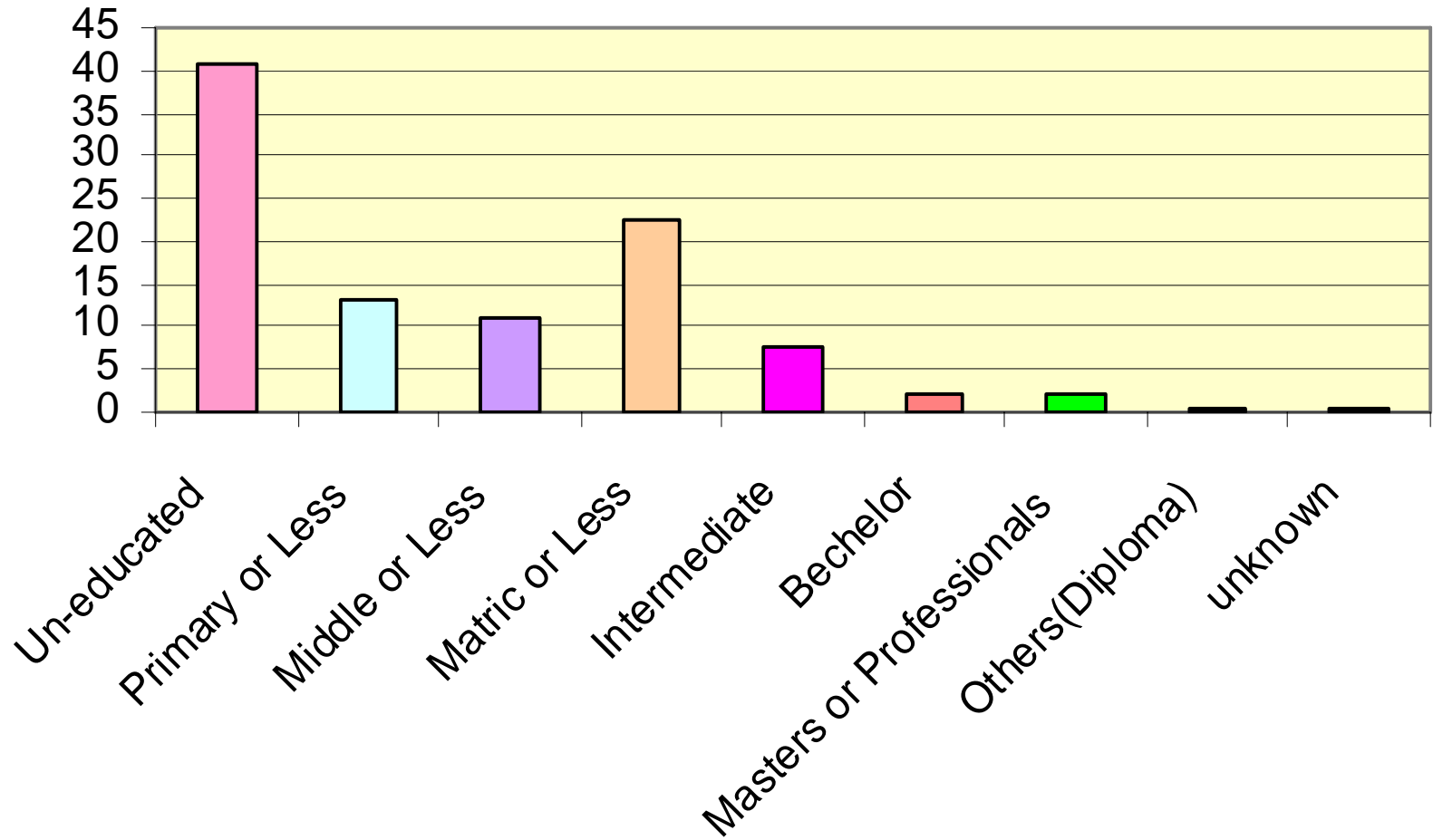
- Most of the diseases are due to poor quality of “Water & Sanitation” in the locality.
- Electricity is available in each household & 70% have Sui gas connections .
- For drinking purpose most of the people used direct “Motor ”.
- More than 80% people have access to TV while 28% have access to cable .
- 47% of the household have no kitchen so they usually cook in open air or in the rooms.

- 70% of the households have proper toilet facility but there is no proper arrangement of waste water & solid waste disposal.
- 70% households have only 1 or 2 rooms.
- Majority have their own houses and average area of plot-size is 5 marlas.

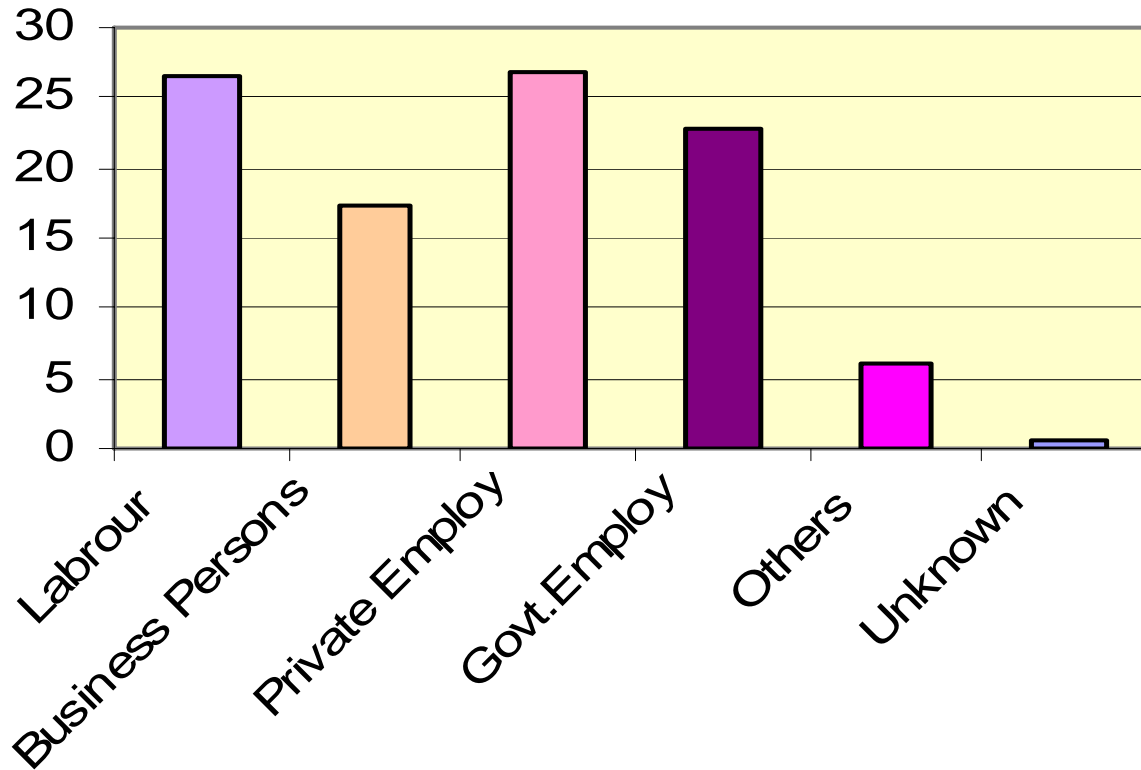
Social Profile



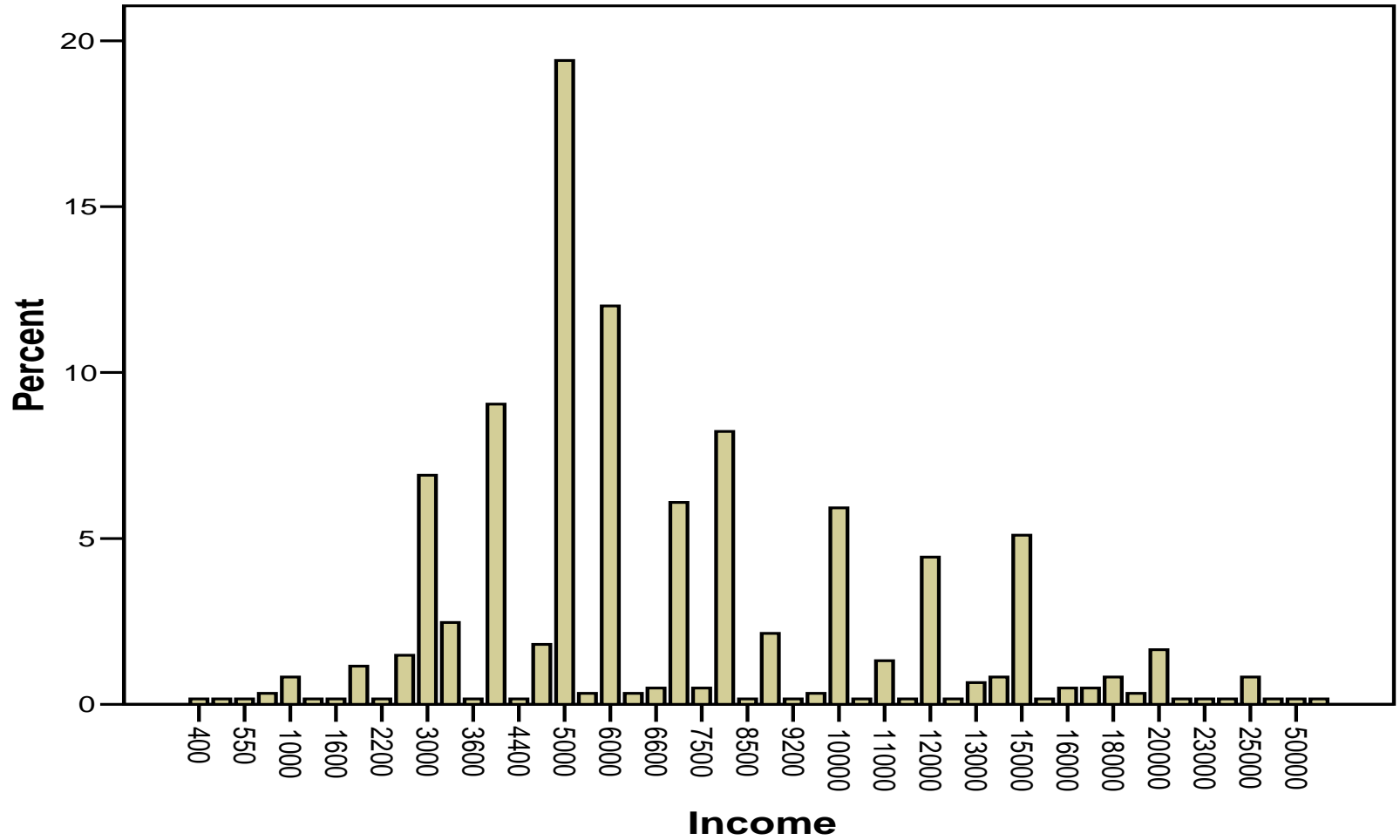
Well-being Indicator (Education)



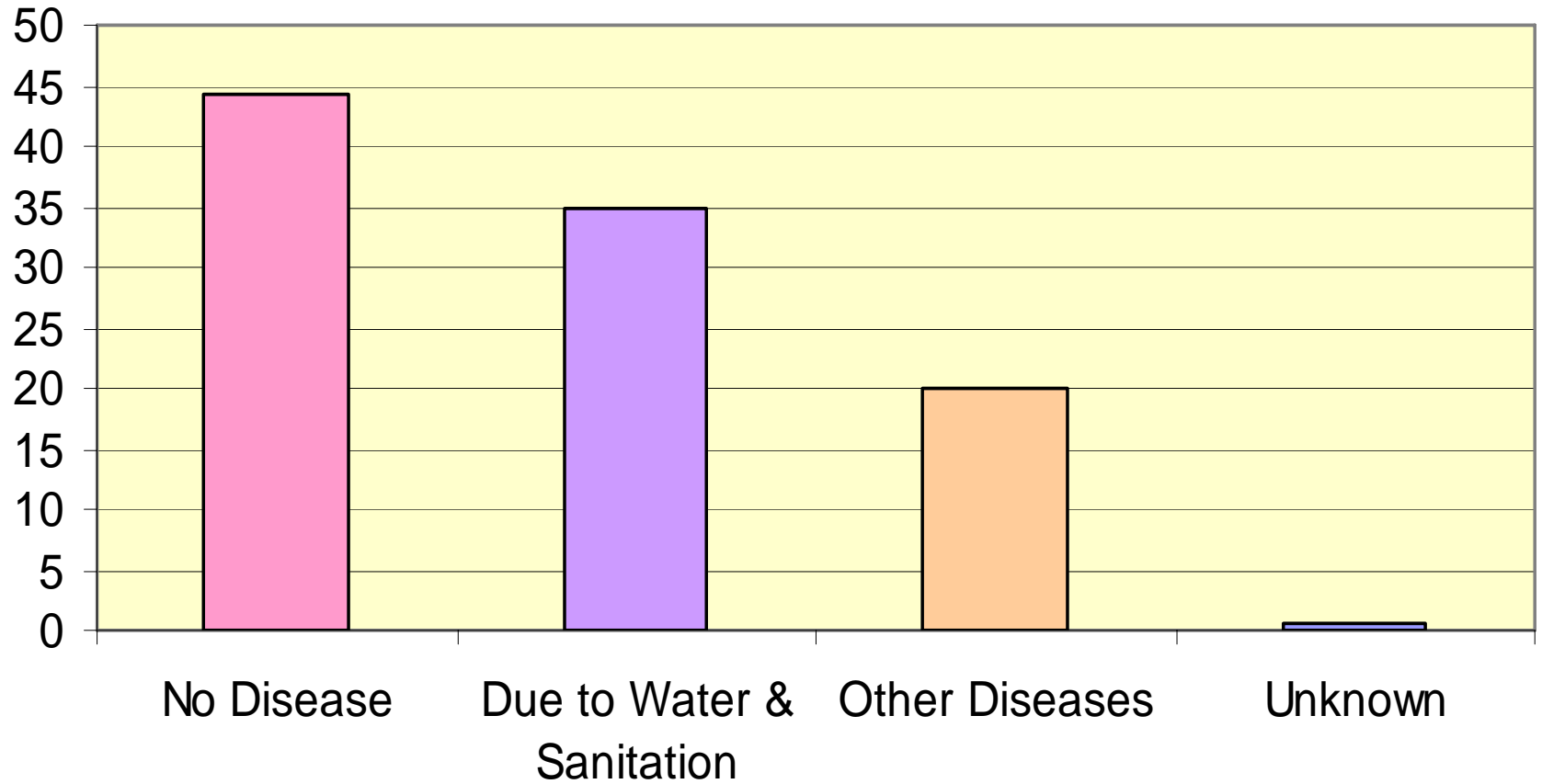
Occupational Profile



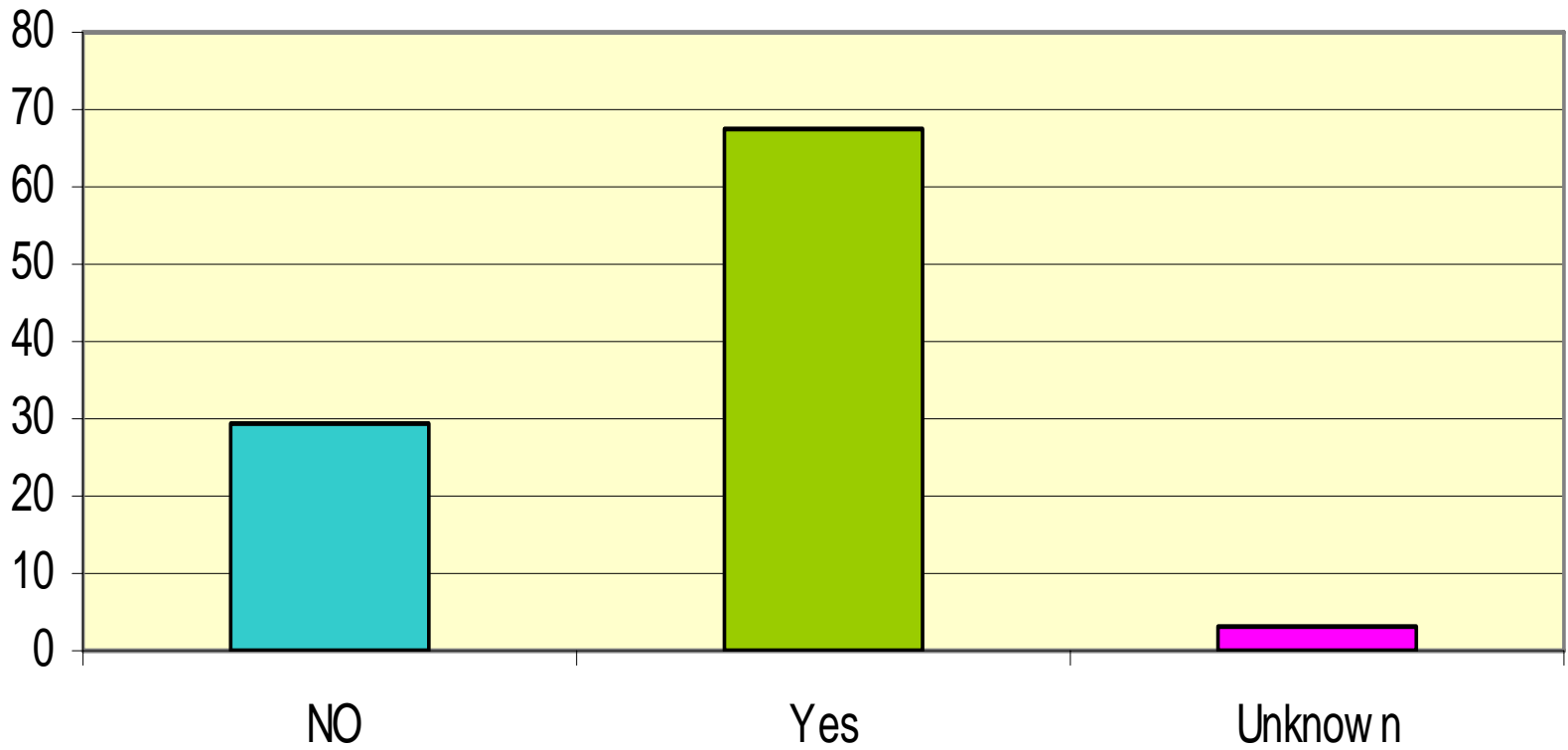
Income



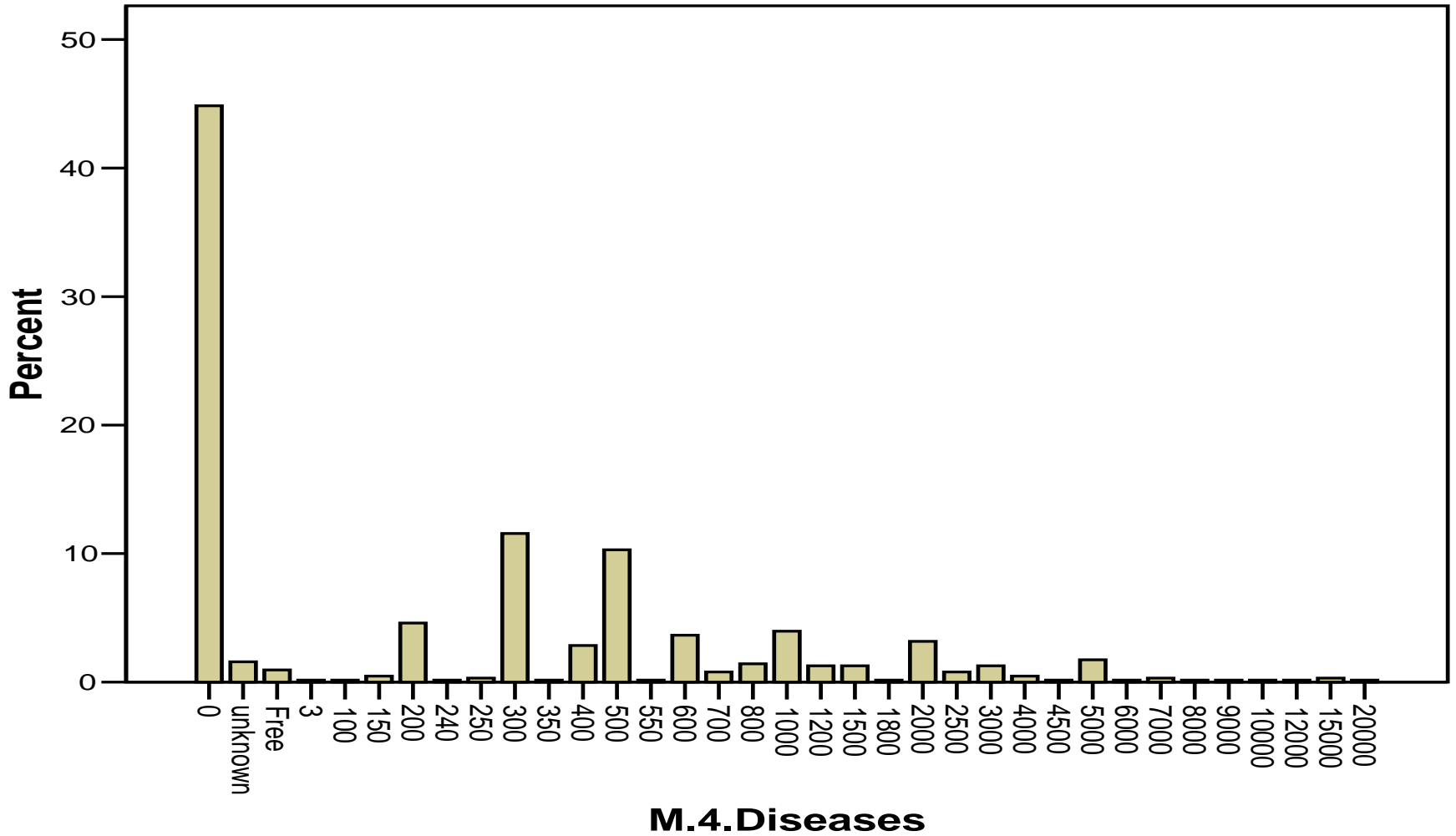
Well-being Indicator (Health-Diseases Profile)



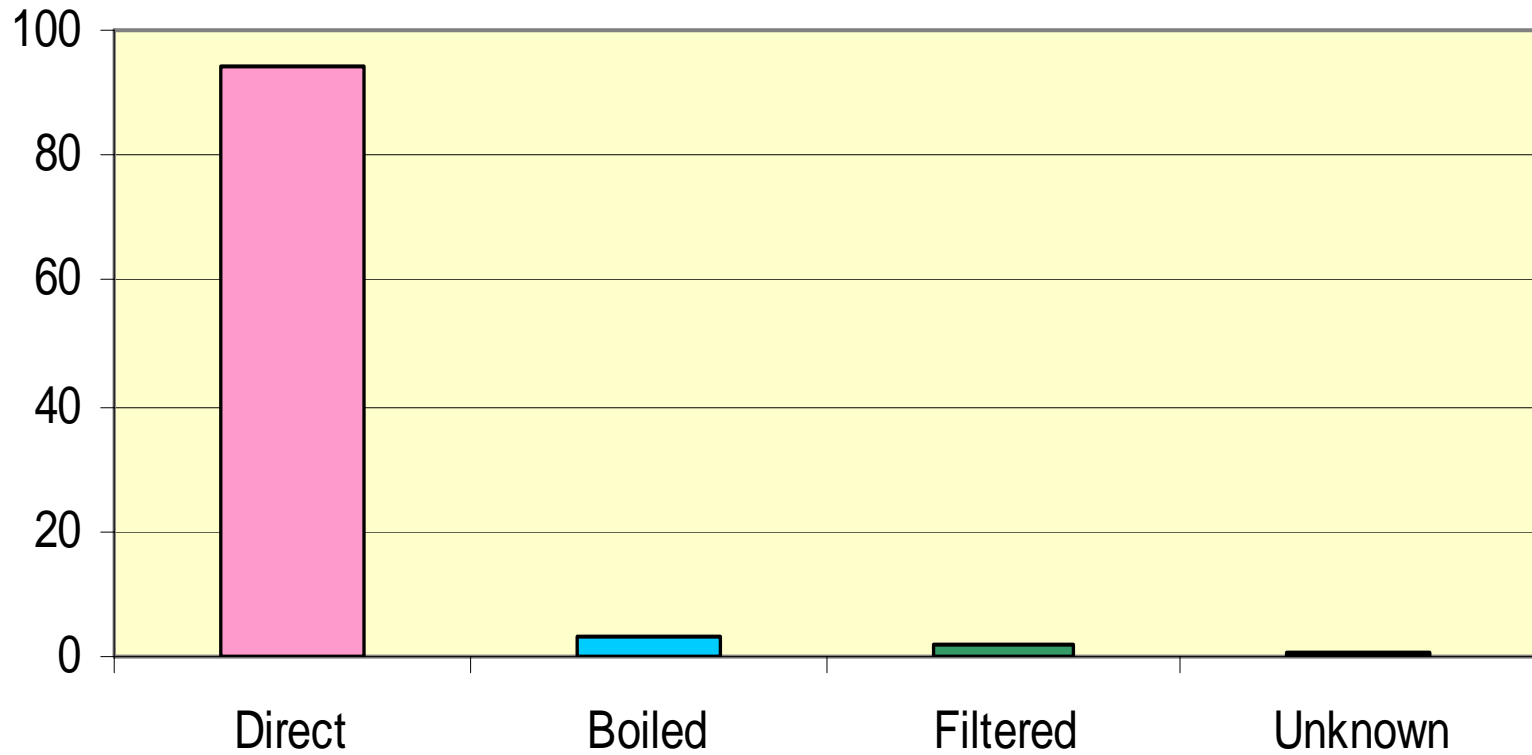
Gas Connection



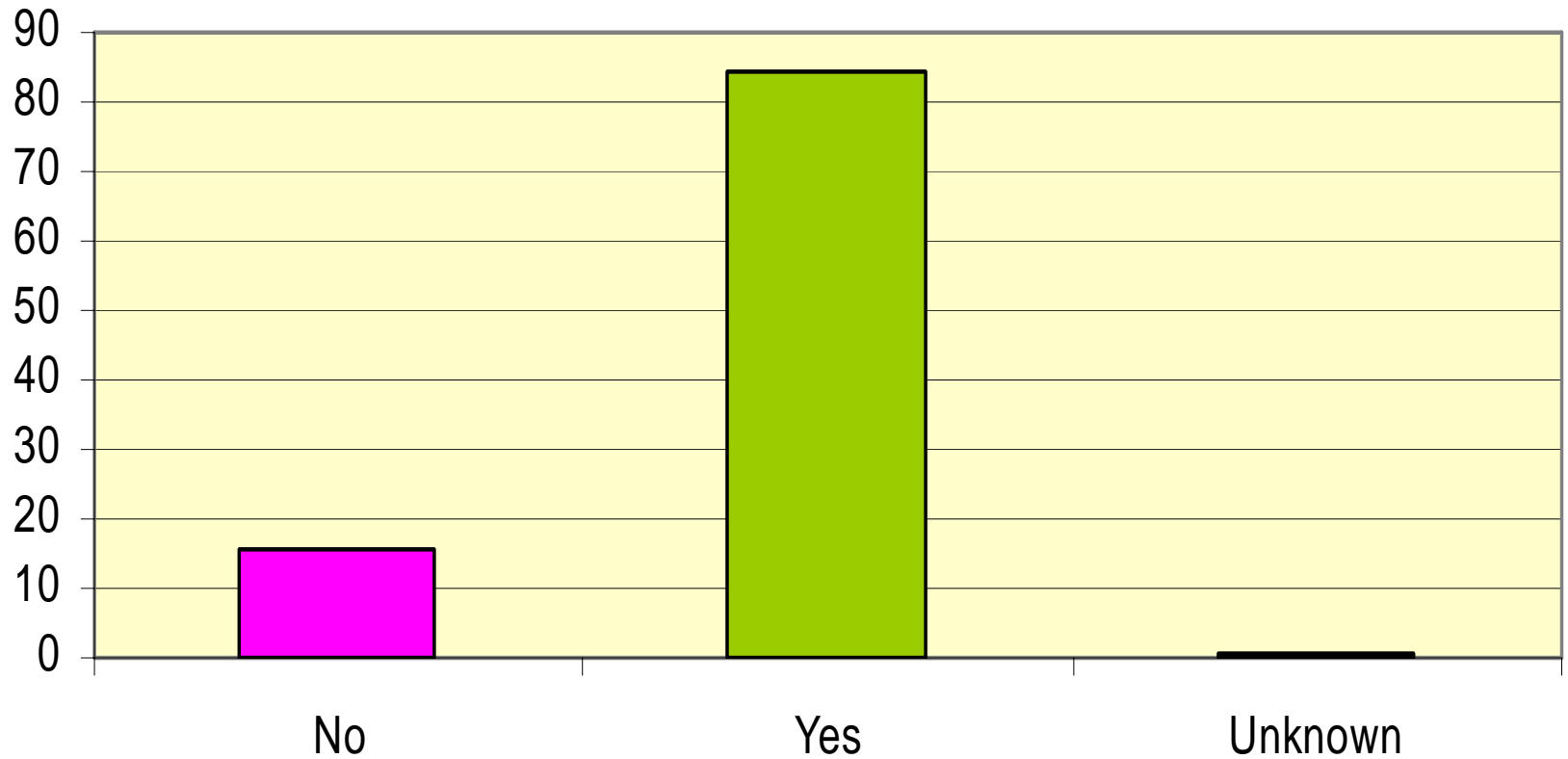
M.4.Diseases



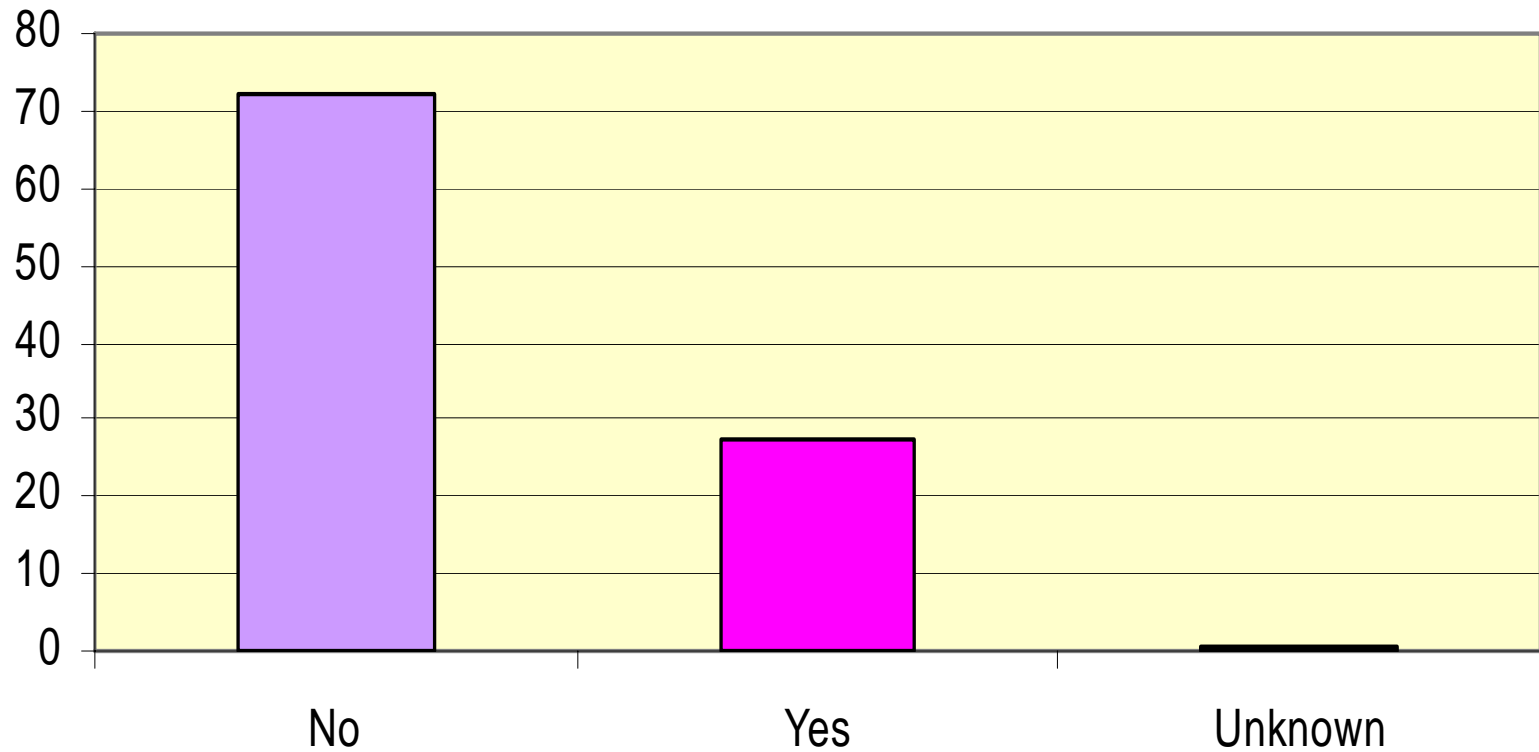
Sources & Practices about Drinking Water



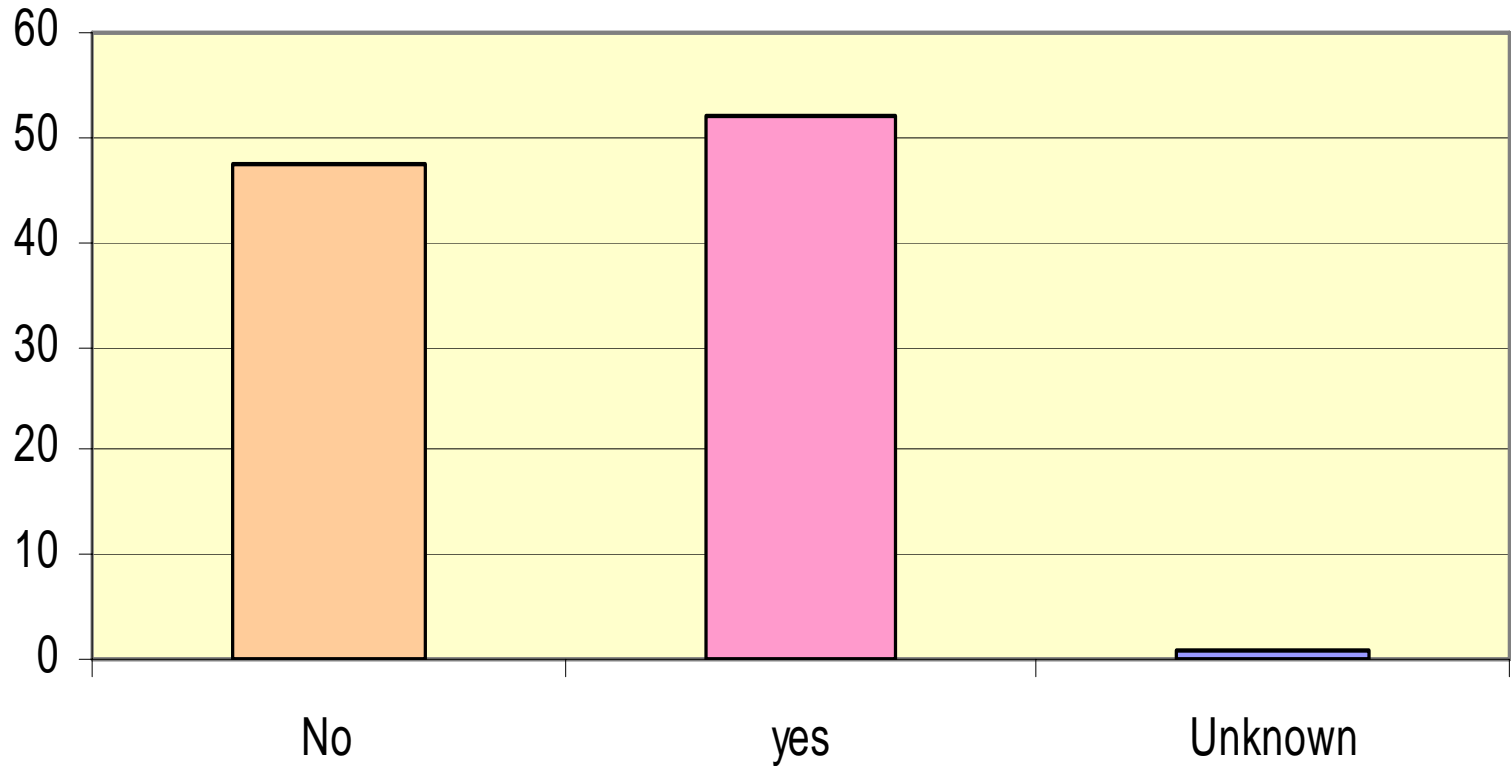
Access to Information (T.V)



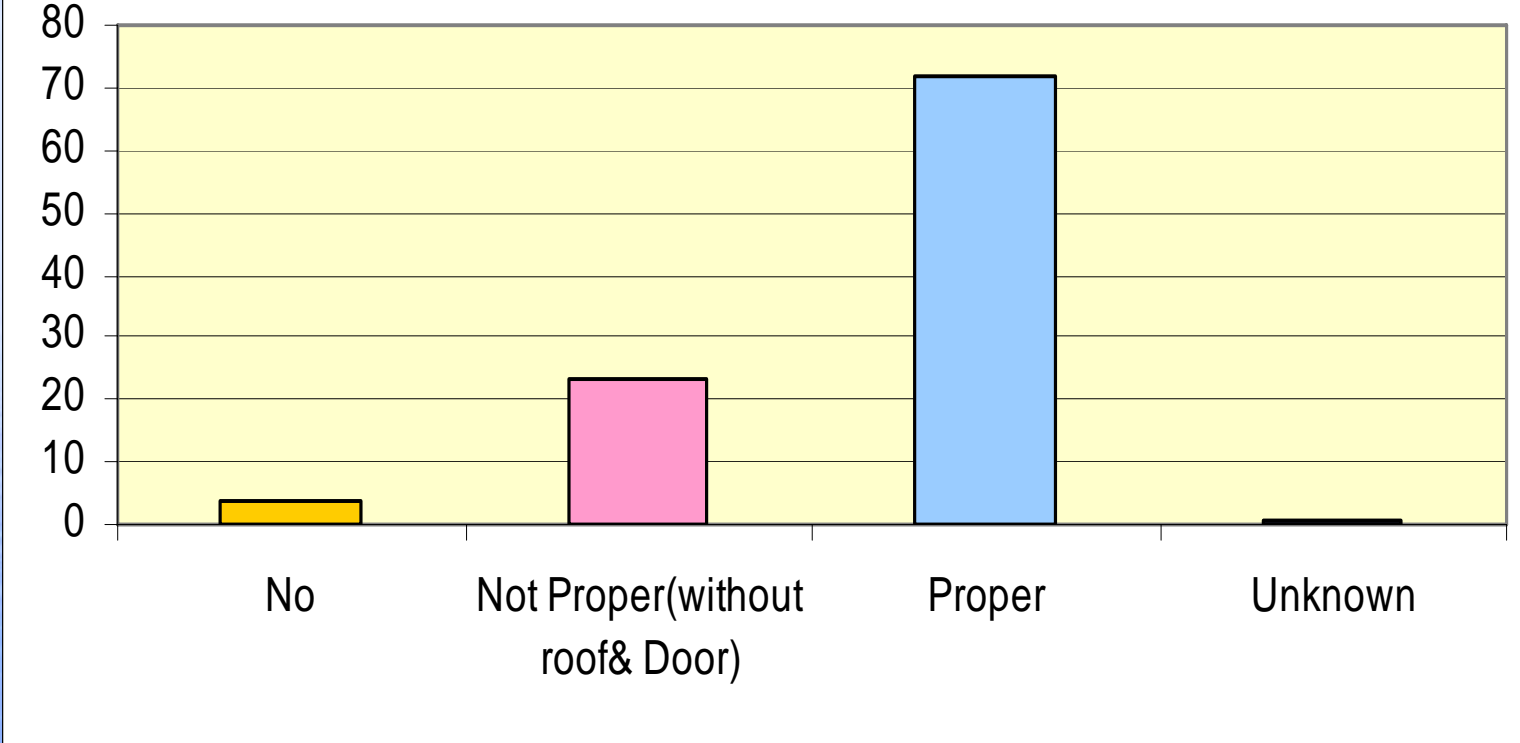
Access to Information (Cable)



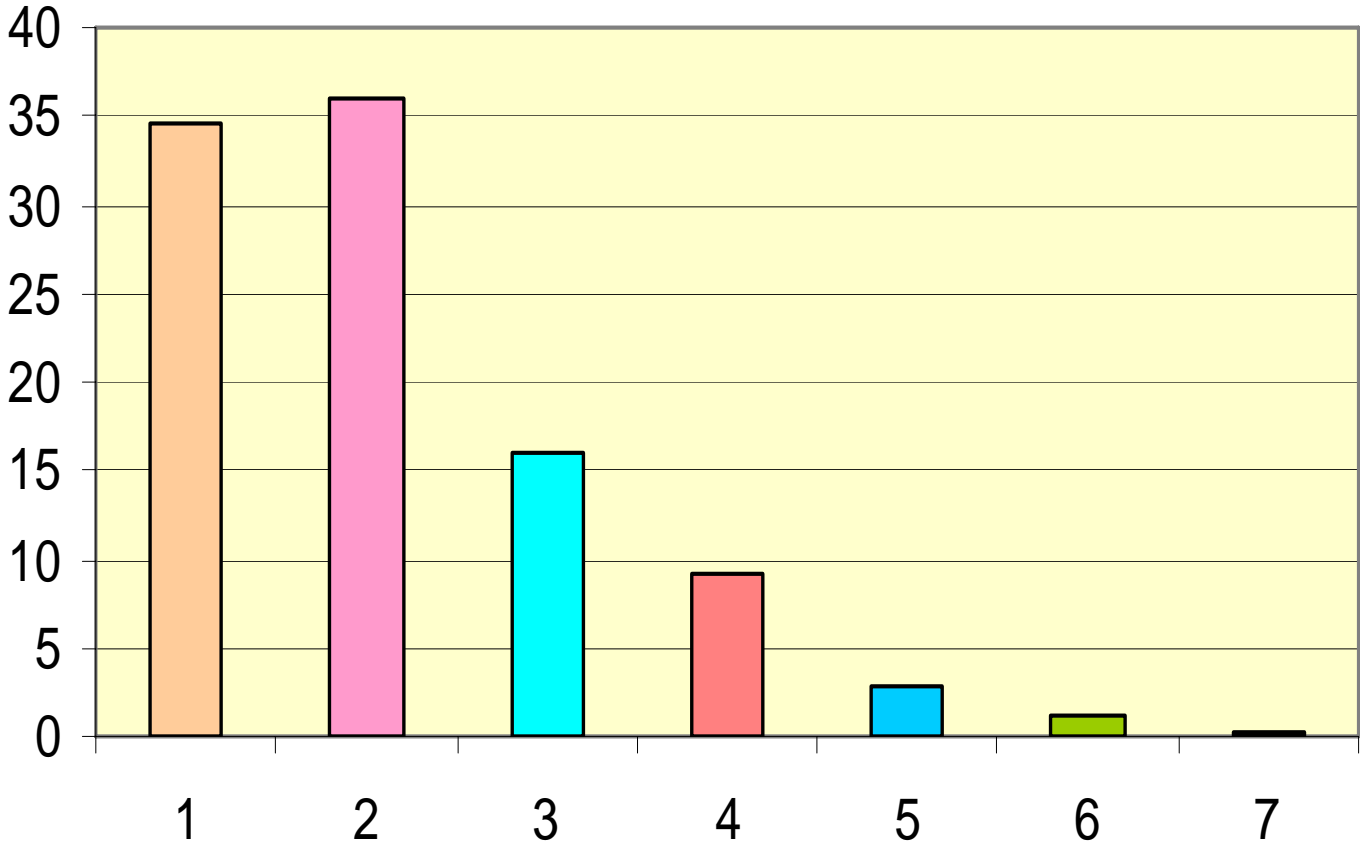
Availability of Kitchen



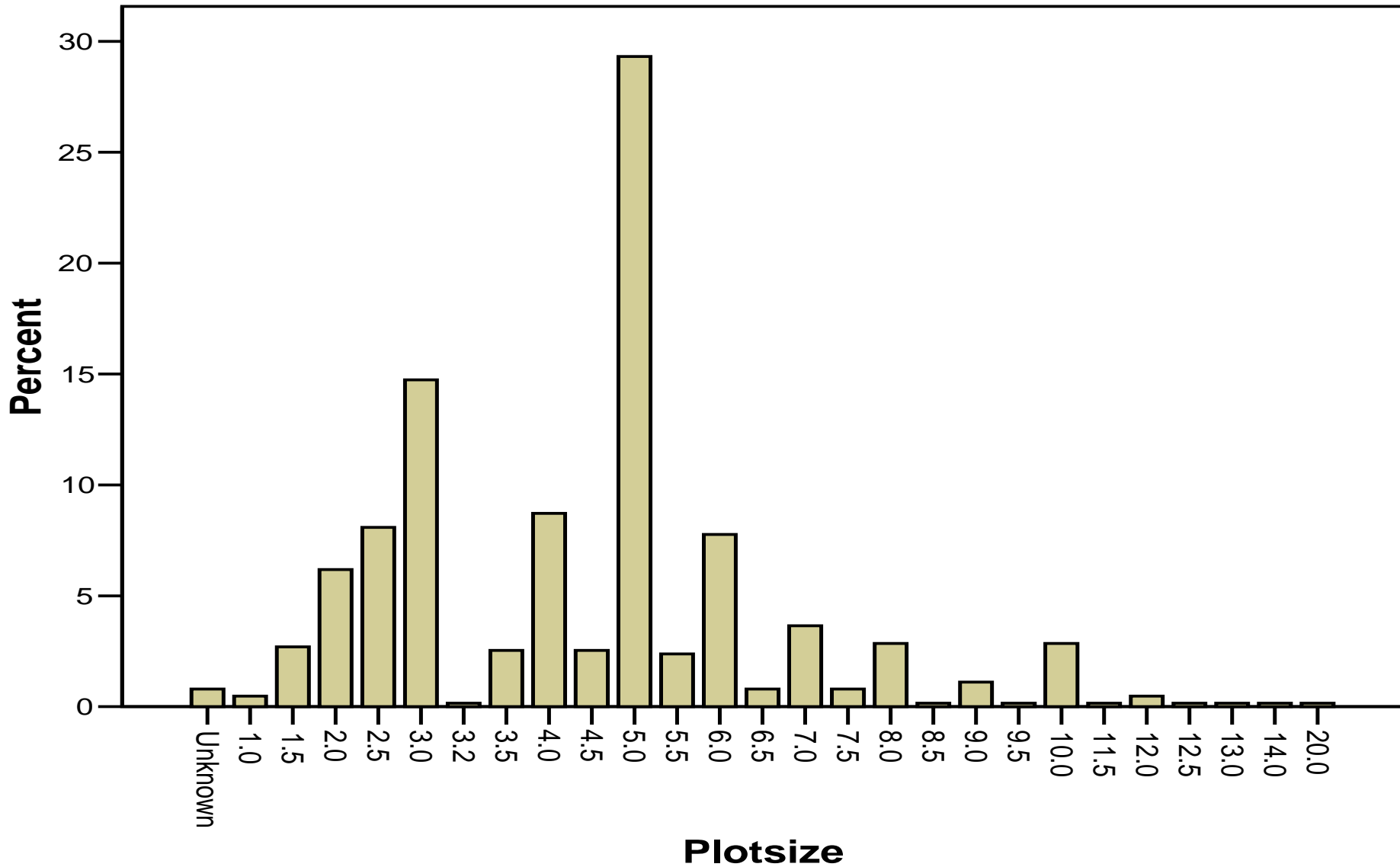
Sanitation Condition(Toilets)



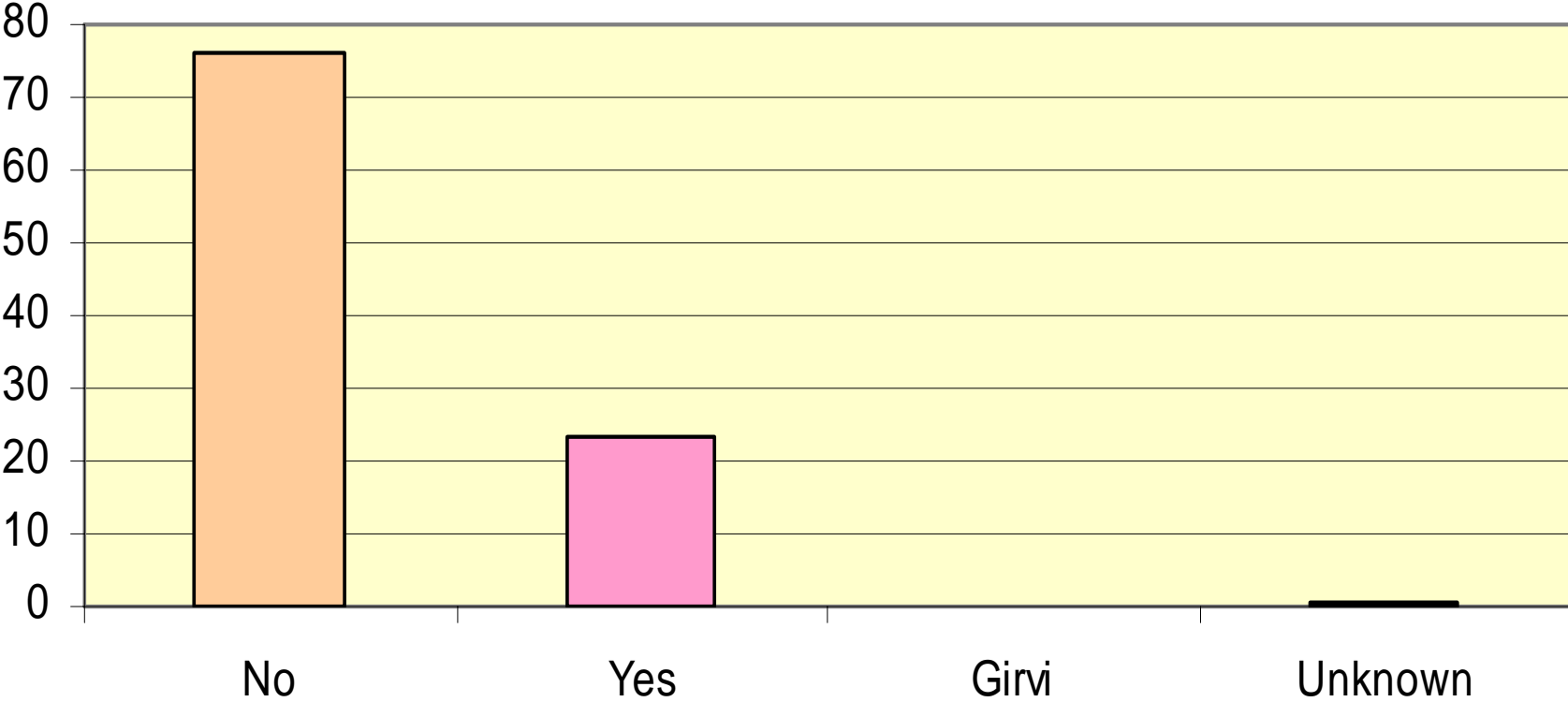
Habitable Area (Number of Rooms)



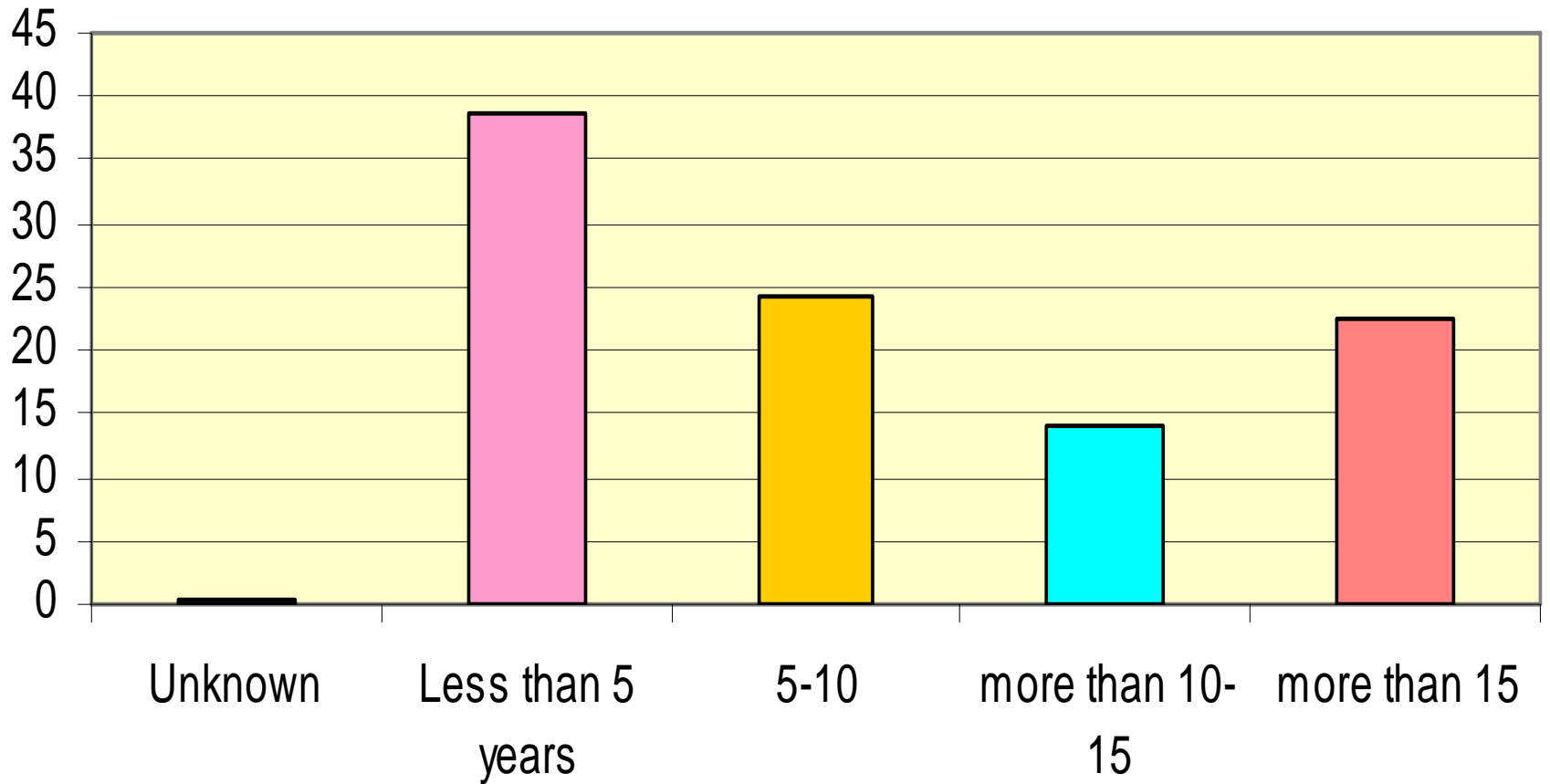
Plotsize



Trend of Rent

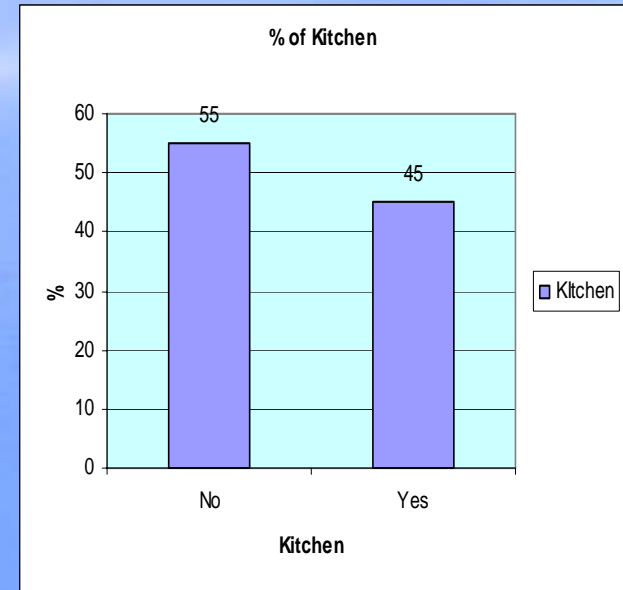


Trend of living period



Changa Pani Program- A learning Social Policy Model for Urban Water Sector in Punjab

- Empowerment of Communities through social mobilization and project decision making
- Inter and Intra Generational Equity – addressing the needs of present and future generation



Changa Pani Program- A learning Social Policy Model for Urban Water Sector in Punjab

- Component Sharing – WASA and Community
- Partnership Model for Performance Improvement

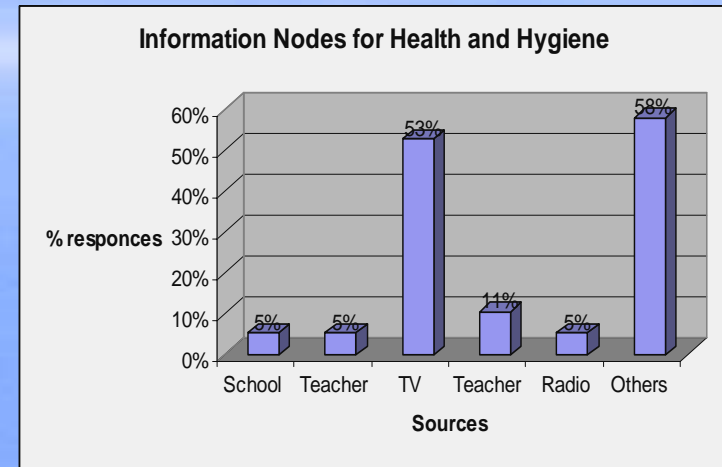
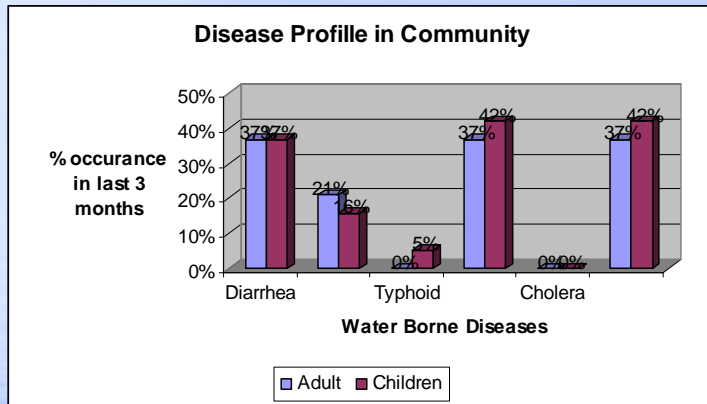


Salient Features of Changa Pani

- Steering Committee – UU , WASA, UC -60 and ASB (Civil Society)
- Integrated Approach – Water and Sanitation
- 24/7 Water Supply
- Digital Meters- tested for intermittent supply
- Overhead Tank (50,000 Gallons)-innovative design
- One tube well (4 cusecs)
- 3000 households- 20,000 people –Phase 1
- Health , Hygiene and Conservation Education
- Community Mobilization on Lanes
- Women Water Groups



Project Activities : 100 Hours Research –IOE University of London



Key Project Component

- Government of Punjab Funding to WASA from CM Package for Large Cities
- External Infrastructure WATSAN – WASA
 - Internal Infrastructure – Community
- Community Mobilization and Group Formation at Lane, Mohalla and UC Level
- Formation of Women Water Groups to address gender concerns



Key Project Component

- Behavioral Change Educational Programme for Health and Hygiene and Water Conservation
 - Community & Women's – Innovative communication messages and activities
 - School (Teacher and Children) through Curriculum Enrichment and Environmental Projects in Schools, Teacher Training
- Research –University of London (Urban Unit)
- International Networking (VSO and Water Action Learning Network)
- Capacity Building of Changa Pani Staff and WASA Project Staff (National Exposure Training)
- Poverty Focus – 300 household for revolving loan for internal component



Project Quality Assurance through MOU – by Steering Committee

As this is a partnership model MOU defines the key partnership parameters

- WASA – Design and Implementation of the Hard Ware Component , Project Support office and financial management
- Urban Unit : Overall Programme Design, Training and Policy Learning , Coordination and Quality Assurance
- ASB : Community Mobilization Advice and Participatory Mapping
- UC -60 : Facilitate Community Financing and Mobilization
-



Project Key Activities

- Exposure Visit of WASA –Lahore and UC 60 to FSB ASB Model
- Recruitment of WASA Staff (by MD WASA and Steering Committee)
- Establishment of Office at Badar Colony
- Training of WASA Staff by Urban Unit and ASB
- Community socio economic survey and Contact - 1500 households
- Mapping and Surveying
- Regular Meeting of Steering Committee –
- Design and Launching of web site www.changapani.org (urban Unit and ASB)
- GIS Data Base and Research

Activities Profile in the Project



Web site shot

Changa Pani Programme | Integrated Water Supply and Sanitation Project in Lahore Pakistan - Microsoft Internet Explorer

File Edit View Favorites Tools Help

Back Search Favorites

Address <http://www.changapani.org/> Go Links Settings

Google Go Bookmarks 6 blocked Check AutoLink AutoFill Send to

About us | [Vision & Mission](#) | [Contact Us](#) | [Site Map](#) | [Web master](#) | Update: Saturday August 25, 2007

URBAN UNIT ANJUMAN SAMAJI BAHBOOD GOVT OF PUNJAB WASA LAHORE CITY GOVT LAHORE

CHANGA PANI PROGRAMME

Is aimed to built a partnership with community for access to water and sanitation services

Integrated Water Supply and Sanitation Project Changa Pani Program in Lahore

Changa Pani Programme a strategic initiative of the Government of Punjab through Urban Unit, Planning and Development Department in Partnership with City District Government Lahore, WASA Lahore (Water utility) , Anjuman Samaji Bahbood(ASB) a civil society organization.

The Changa Pani means good water. The purpose is to design and implementation of integrated water supply and sanitation project for poor un served community.

Changa Pani Program A Unique Project

Mission is to provide affordabel Water and Sanitation services of good quality with partnership of Community, WASA, Civil Society, Government of Punjab

[Design of Internal and External component](#)

start 2 Windows Explorer 3 Internet Explorer changa pani Chairma... Water and Sanitation... 11:05 AM

Water Towers: Innovation in Designbeyond conventional approach www.changapani.org



Project Financing : External Component in Pak Rs

- Overall cost of the Project = **122 M**
- **E** = Main Infrastructure Trunk Sewer : **30 M**
- **A** = Water Supply External – **24.3 M**
- **B** = Sewerage External – **32.88 M**
- **C** = Office , Education, Research **3.38 M**
- **D** = Bulk Meter **0.25 M**
- Total External Component : $A+B+ D=$
57.43 M

Project Financing : **Internal Component**

- F=Water Supply – **5.74 M**
- G=Sewerage – **14.31 M**
- H=Water Meters – **12.33 M**
- Total Internal : F+G+H = **32.38 M**

❖ **ABSTRACT**

- **MAIN** (E+C)= 33.38 (MAIN TRUNK + OFFICE)
- **EXTERNAL** = 57.43
- **INTERNAL** = 32.38
- Community Contribution 36%

COST of Changa Pani

- TOTAL COST = 122.8 M
- Government funding 104.85 Million
- Total PC-I for Government Financing 104.84 Million
- Which includes loan for meters and poor households to be recovered from the consumers by WASA

Cost Per Household (community)

- 6966 per Household in six installments (Rs 995 per month)
- Rs 580 per HH / Month water and sanitation investment by Community
- which is Rs 15 per head per month for 5 years
- Rs 73 for meters in 5 years

Government Economic Cost and Benefit

- Cost per household :Rs 18083 per HH
- Cost Per Head 2348
- Per year cost for providing services per head for MDG in one year is Rs 195 for external
- Overall external and main system and mobilization is Rs 328 per head/annum (5.3 US \$)

What can be learn from CPP?

- How an integrated project is designed?
- What is the partnership model of community and utility projects?
- How much community can contribute?
- How communities can be mobilized in urban areas?
- What are the effective communication messages for health and hygiene and conservation education
- how to provide 24/7
- How to develop capacity of communities and WASA